

311 901-9020:9003

SAS und Chiffrierdienst der DDR

Sheet: /

File: CPU.sch

Title: T-316 Einplatinenrechner CMOS

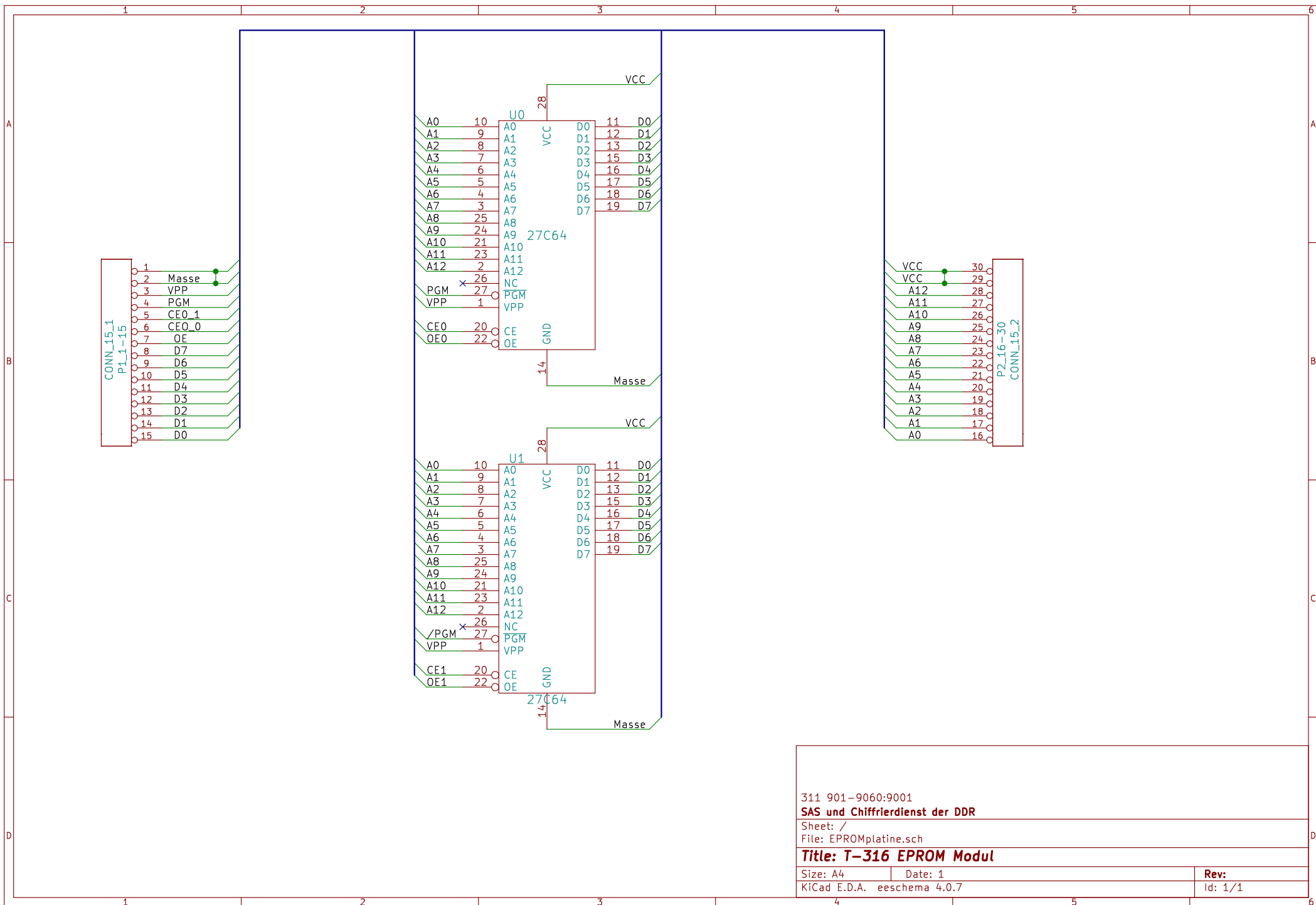
Size: A4

Date:

KiCad E.D.A. kicad 4.0.7

Rev:

Id: 1/1



311 901-9060:9001

SAS und Chiffrierdienst der DDR

Sheet: /

File: EPROMplatine.sch

Title: T-316 EPROM Modul

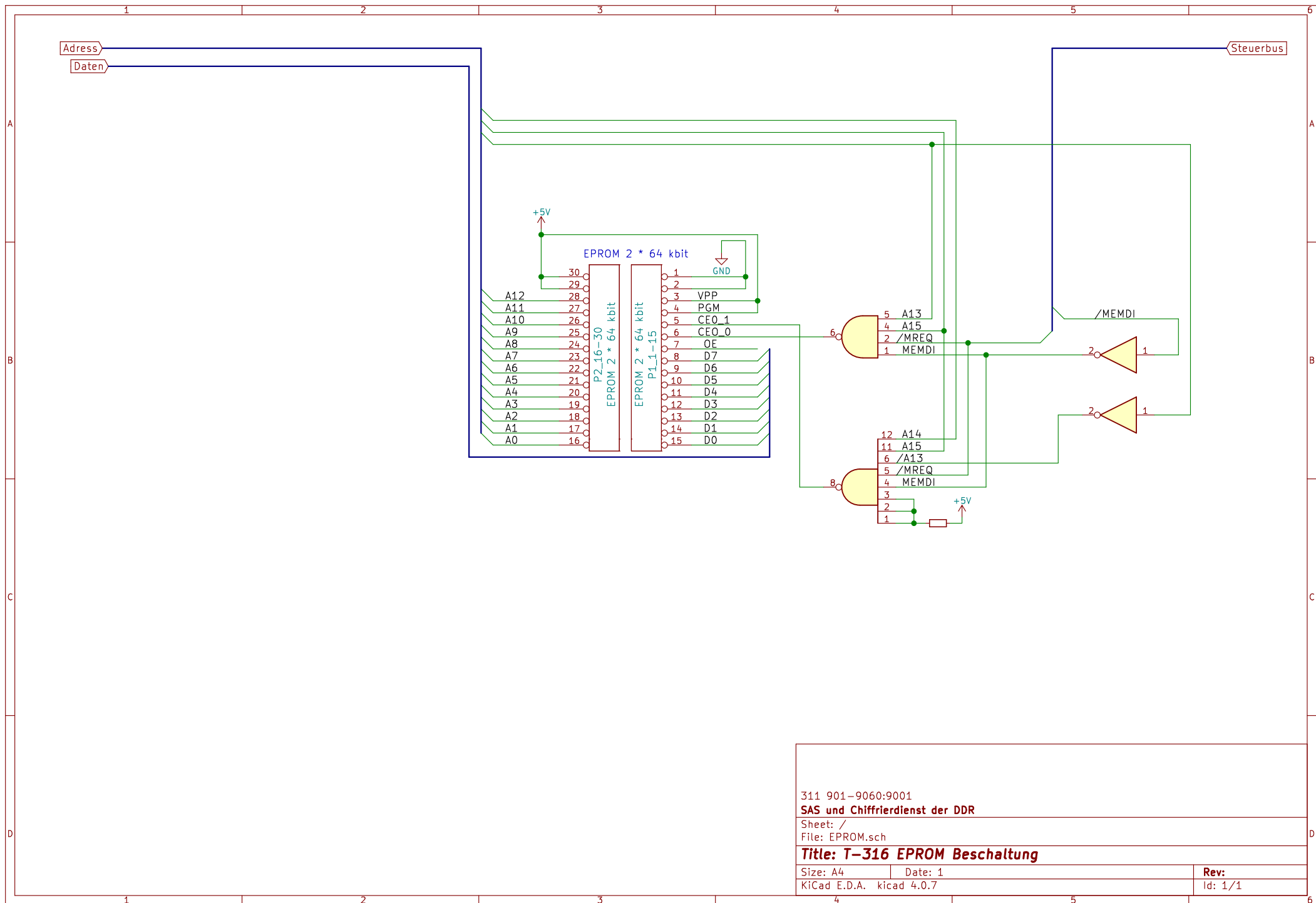
Size: A4

Date: 1

KiCad E.D.A. eeschema 4.0.7

Rev:

Id: 1/1



311 901-9060:9001

SAS und Chiffrierdienst der DDR

Sheet: /

File: EPROM.sch

Title: T-316 EPROM Beschaltung

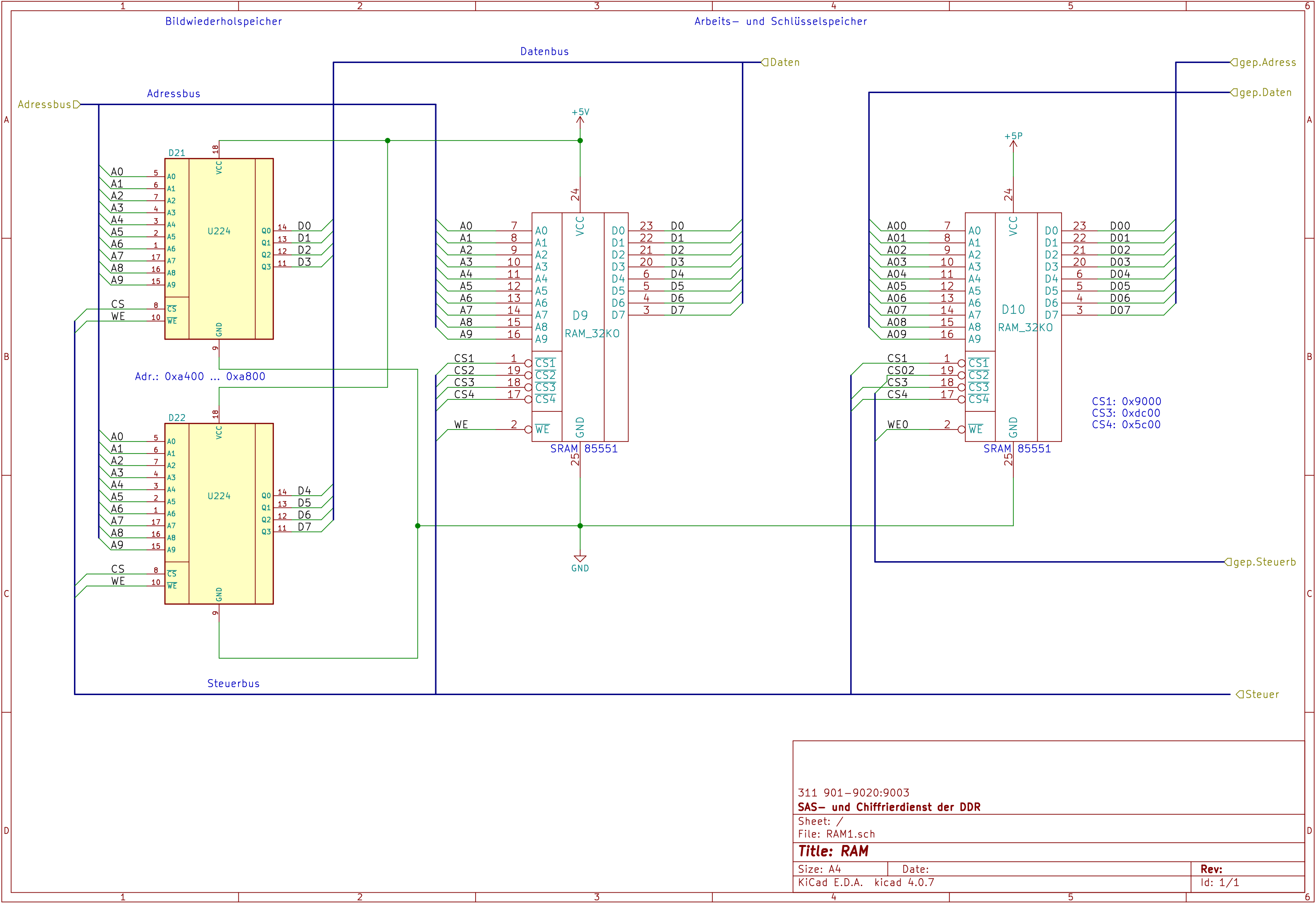
Size: A4

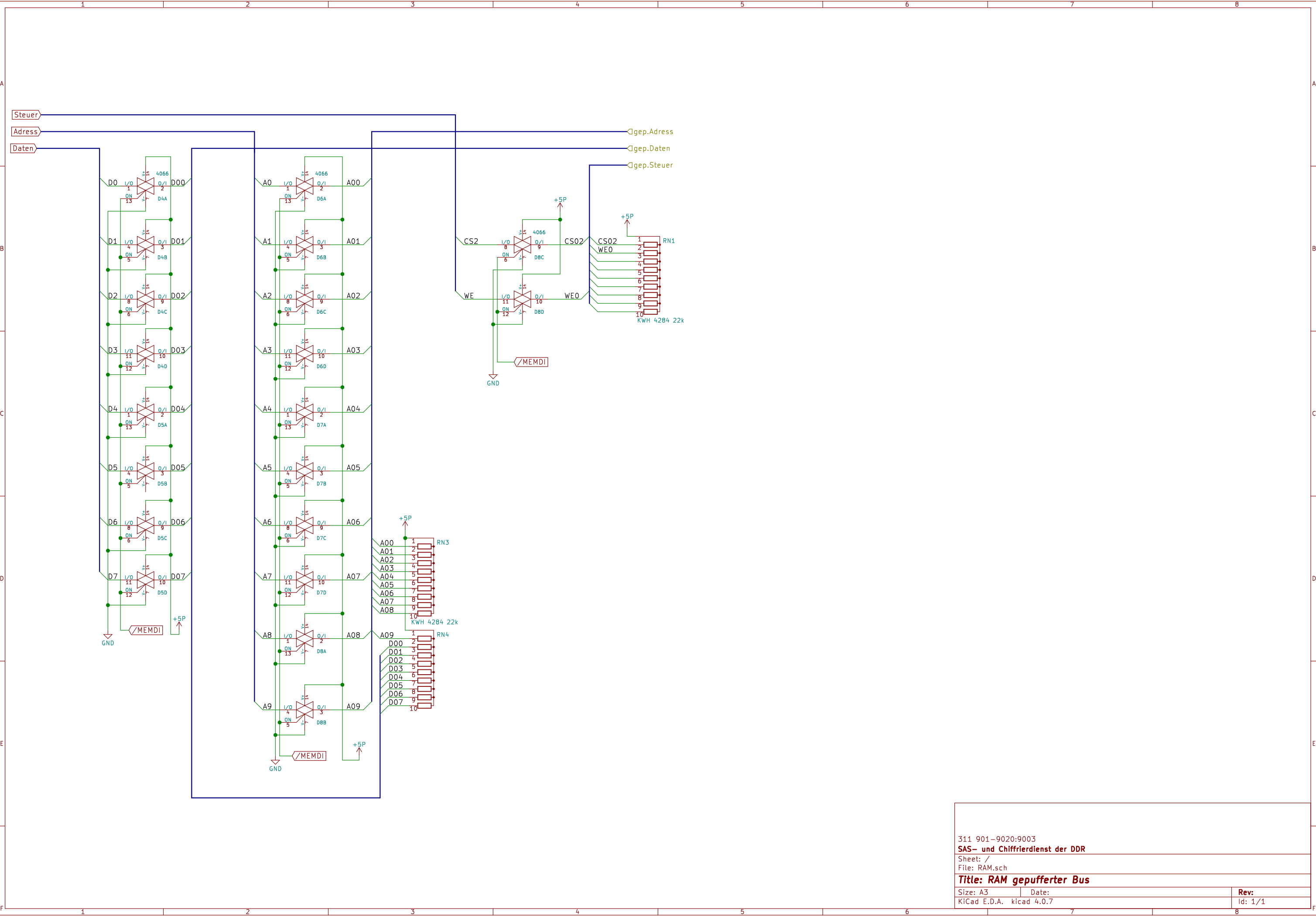
Date: 1

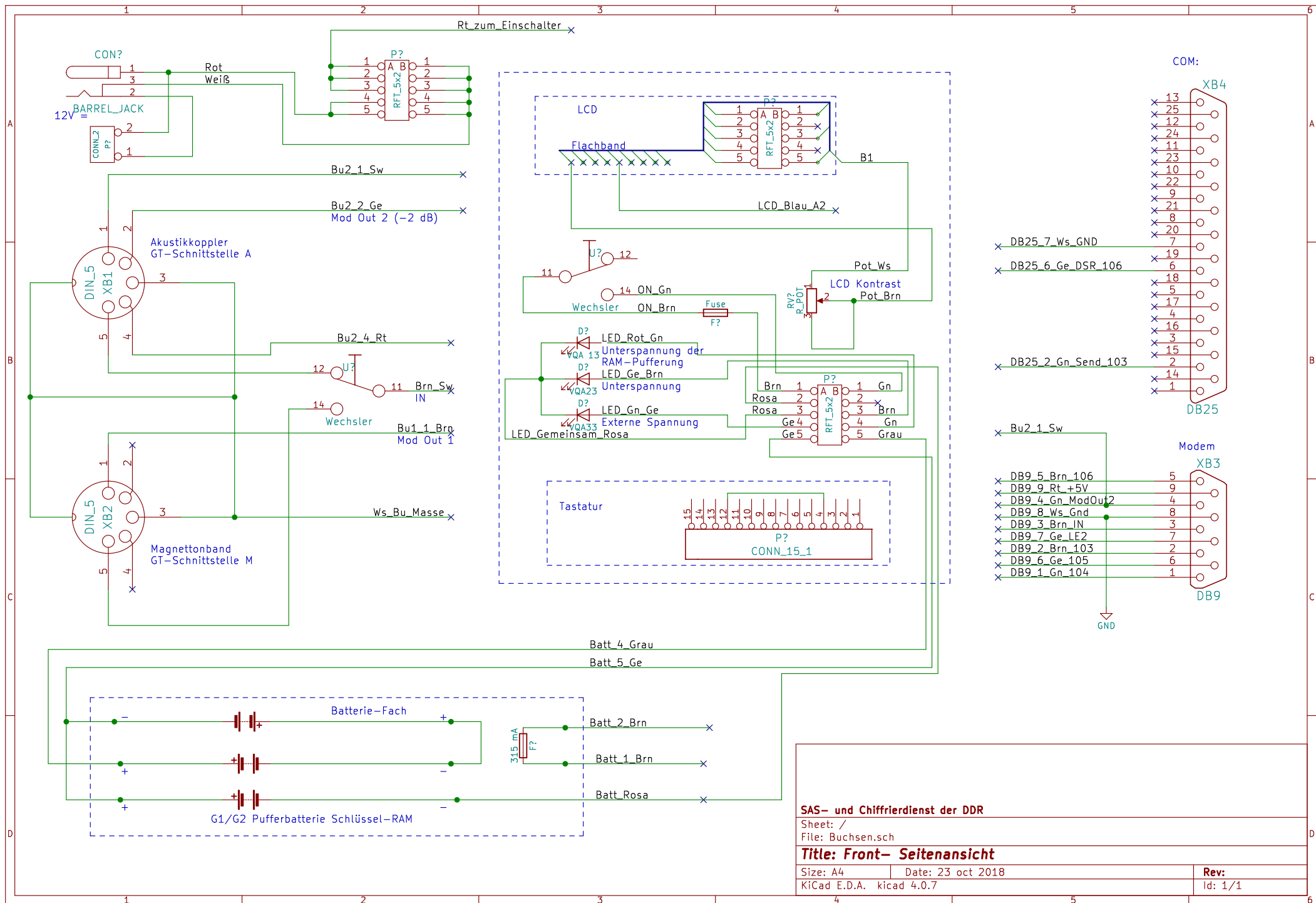
Rev:

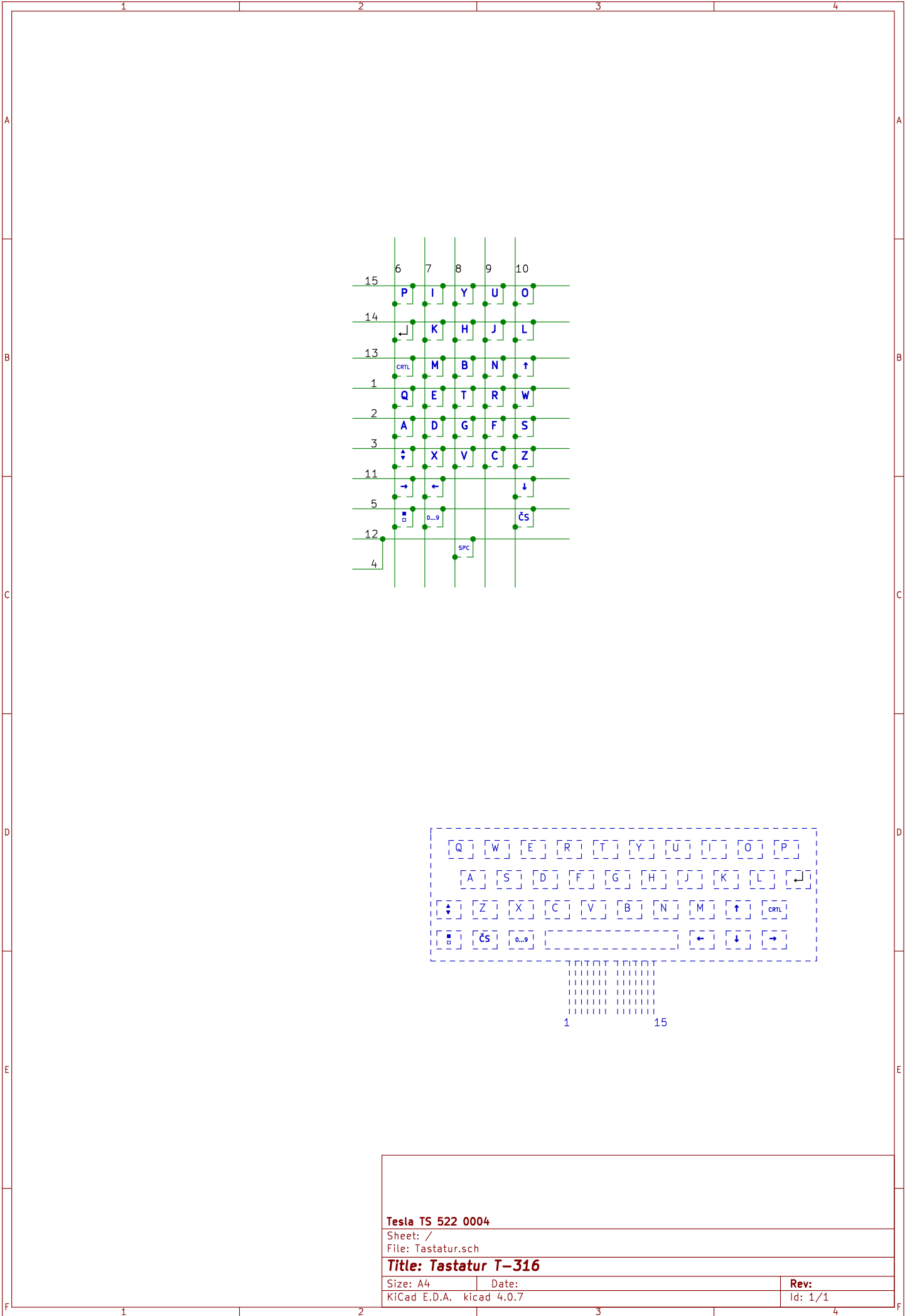
KiCad E.D.A. kicad 4.0.7

Id: 1/1









Tesla TS 522 0004

Sheet: /

File: Tastatur.sch

Title: **Tastatur T-316**

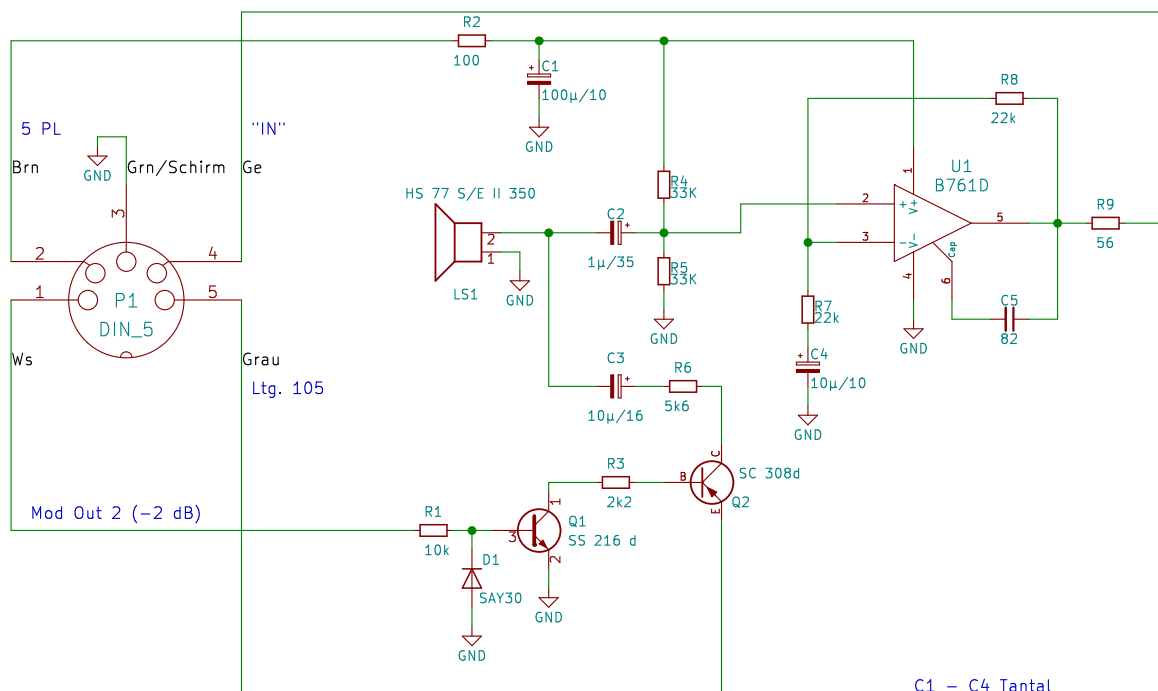
Size: A4

Date:

KiCad E.D.A. kicad 4.0.7

Rev:

Id: 1/1



C1 – C4 Tantal
LS1 50 mH, 350 Ohm

311-895-1000-9002

SAS und Chiffrierdienst der DDR

Sheet: /

File: AK.sch

Title: Akustikkoppler AK T-316

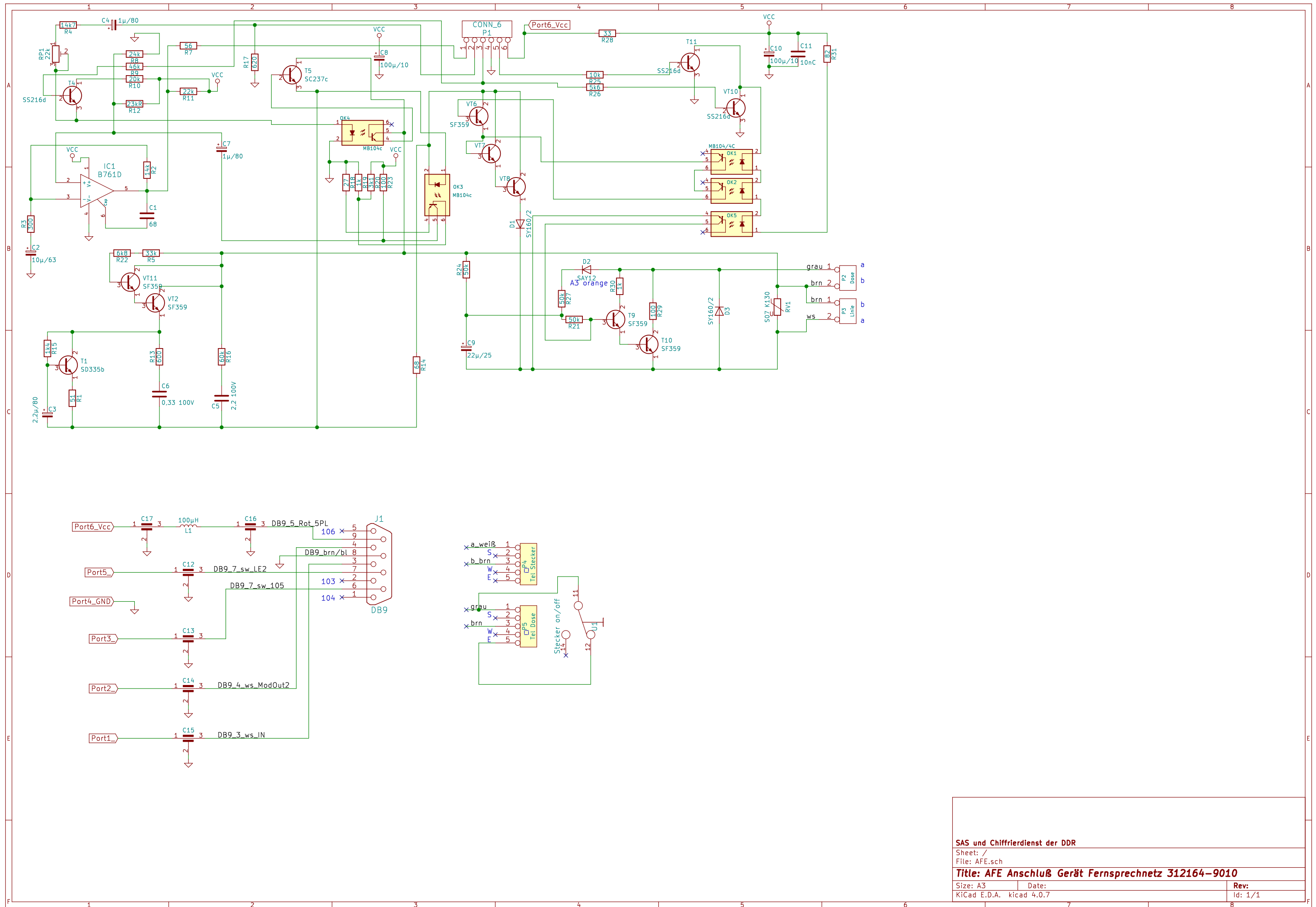
Size: A4

Date:

KiCad E.D.A. kicad 4.0.7

Rev:

Id: 1/1



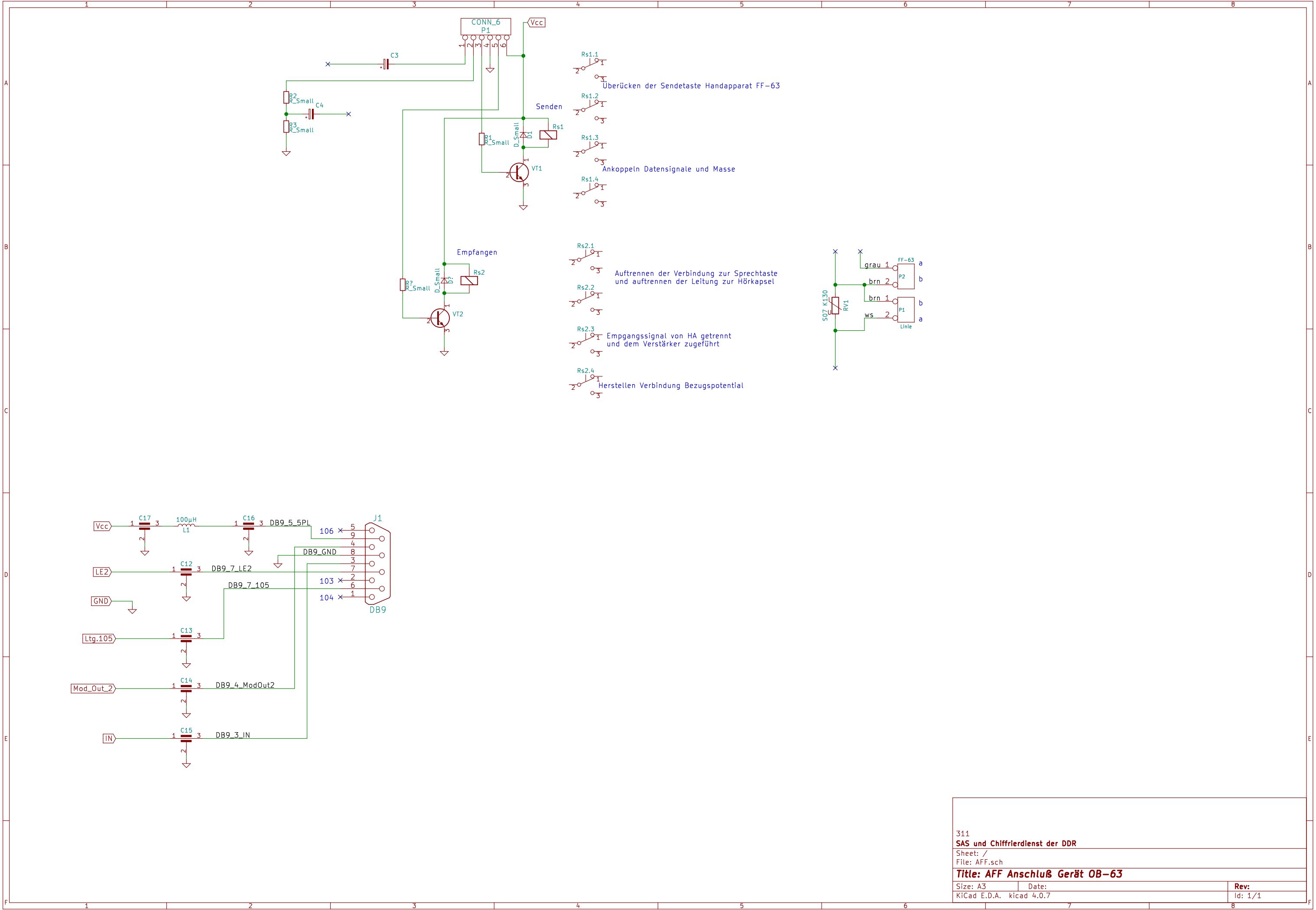
SAS und Chiffrierdienst der DDR

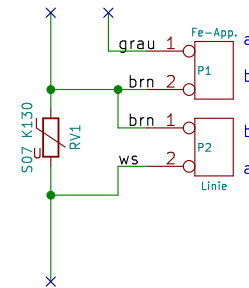
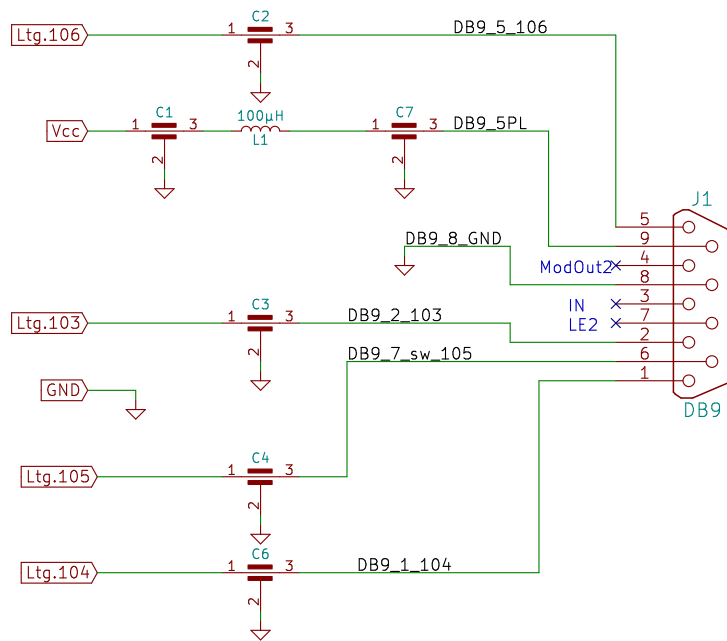
Sheet: /
File: AFE.sch

Title: AFE Anschluß Gerät Fernsprechnetz 312164-9010

Size: A3 Date:
KiCad E.D.A. kicad 4.0.7

Rev:
Id: 1/1





311

SAS und Chiffrierdienst der DDR

Sheet: /

File: Modem.sch

Title: MODEM T-316

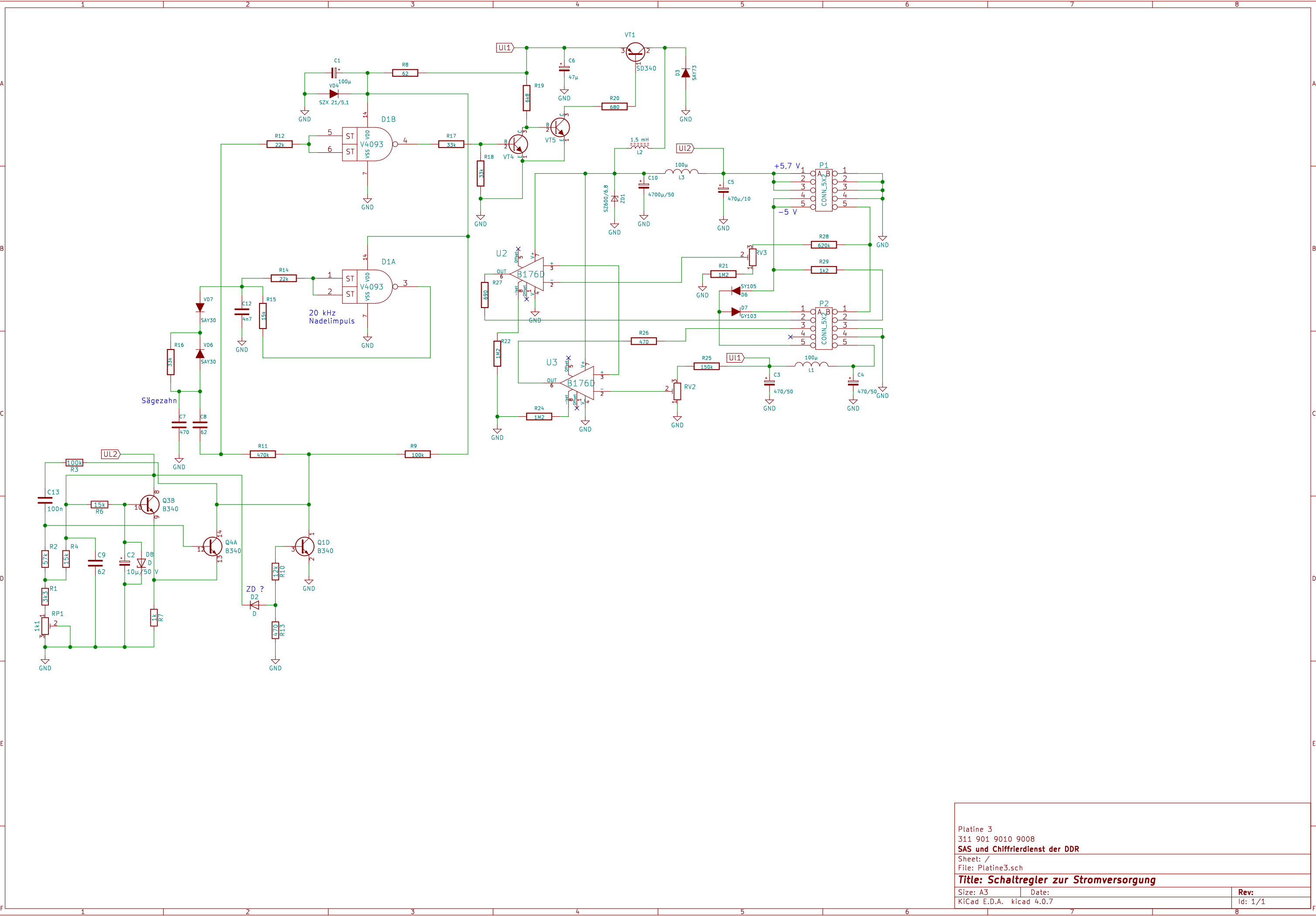
Size: A4

Date:

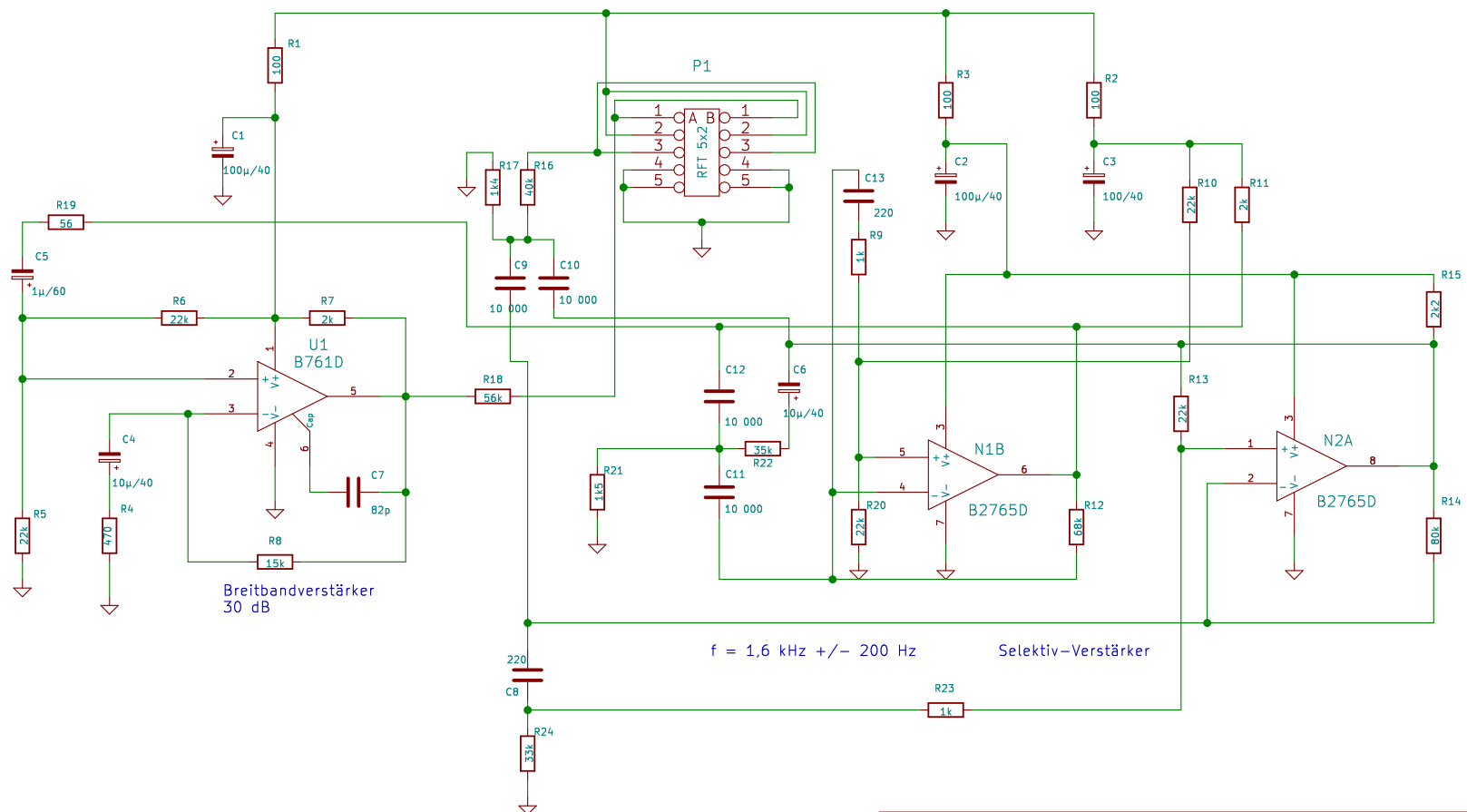
KiCad E.D.A. kicad 4.0.7

Rev:

Id: 1/1



Platine 3		
311 901 9010 9008		
SAS und Chiffrierdienst der DDR		
Sheet: /		
File: Platine3.sch		
Title: Schaltregler zur Stromversorgung		
Size: A3	Date:	Rev:
KiCad E.D.A. kicad 4.0.7		Id: 1/1



Platine 4

311 901 9050 9006

SAS- und Chiffrierdienst der DDR

Sheet: /

File: Platine4.sch

Title: Selektiv- und Breitbandverstärker

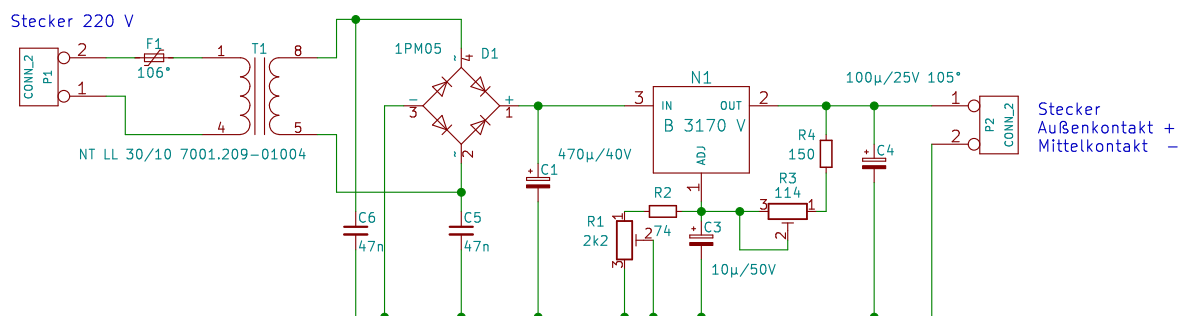
Size: A4

Date:

KiCad E.D.A. kicad 4.0.7

Rev:

Id: 1/1



7001.209-02004

RFT N 19199

VEB Elektronik Gießübel DDR

Sheet: /

File: NT.sch

Title: R 209 Steckernetzteil

Size: A4

Date:

KiCad E.D.A. kicad 4.0.7

Rev:

Id: 1/1